

## WOOD LINE PRODUCTS

### ABOUT WESKO

- One of the World's leading locking system suppliers to the Office Furniture Industry.
- A Vendor Partner you can count on.
- Established in 1991, our production has grown dramatically.
- We now produce millions of locks annually.

### SUPERIOR PRODUCT LINE

- Anti-tip system supports more than 4 drawers and side-by-side configuration.
- Lockbar and anti-tip systems are mounted on one support channel and preassembled to customer specifications with no loose components.
- All-in-one anti-tip and locking system.
- Ability to override the anti-tip mechanism is much more difficult.
- Combination locks are mechanical with master key and no batteries. Solid zinc construction with many mounting options, including: vertical/horizontal, flush/surface.
- Ultra-thin central lock is easier to install and saves space.

### THE BEST CHOICE FOR YOUR LOCKING SYSTEMS

- Highest quality parts and systems in the furniture industry.
- Lowest prices in the global industry.
- Local quality assurance and technical support.
- Quickest turnaround for specialty items, including keying and finishes.

### WESKO WOOD LINE

	PAGE
Locks and Plug Assemblies	2
Combination Lock	6
Central Locking Systems	7
Lockbar Systems	11
Anti-tip Systems	14
Cam Locks	17
Accessories	18

## LOCK AND PLUG ASSEMBLIES

## LOCK PLUGS

## Notes

- Solid zinc construction with no plastic.
- Install in any Timberline or Wesko housing.
- Install with Change Key.
- Optional back clip for snap-in installation.
- Core removal with Change Key.



## Part Information

Finish	Timberline Part Number	Hafele Part Number	Wesko Part Number
Polished Nickel	LP-100	210.04.060	LN-100
Old English	LP-200	210.14.102	LE-200
Black	LP-300	210.04.302	LB-300
Bronze	LP-400	210.04.106	LZ-400
Polished Brass	LP-500	210.04.803	LP-500
Satin Nickel	LP-700	210.04.710	LS-700

## DEADBOLT LOCK—OFFSET BOLT

## Notes

- Vertical and horizontal mounting options.
- Configurable as left or right key rotation on installation.
- 13 mm (½") bolt throw.
- Center to tip (unlocked) dimension - 38 mm (1 ½").
- 180° key rotation.
- Additional bolt lengths and offsets available on request.
- Optionally use with strike plates.



## Part Information

Mounting	Offset	Timberline Part Number	Hafele Part Number	Wesko Part Number
Vertical	15 mm (19/32")	CB-244	238.10.348	DVO-244
Vertical	22 mm (7/8")	CB-245	238.10.350	DVO-245
Horizontal	15 mm (19/32")	CB-234	238.10.358	DHO-234
Horizontal	22 mm (7/8")	CB-235	238.10.360	DHO-235

**DEADBOLT LOCK—STRAIGHT BOLT****Notes**

- Vertical and horizontal mounting options.
- Configurable as left or right key rotation on installation.
- 13 mm ( $\frac{1}{2}$ ") bolt throw.
- 180° key rotation.
- Additional bolt lengths available on request.
- Optionally use with strike plates.
- Center to tip (unlocked) dimensions: Short - 23 mm (29/32"), Long - 35 mm (1 $\frac{3}{8}$ ").

**Part Information**

Mounting	Bolt Length	Timberline Part Number	Hafele Part Number	Wesko Part Number
Vertical	Short	CB-240	238.18.304	DVS-240
Vertical	Long	CB-241	N/A	DVL-241
Horizontal	Short	CB-230	238.18.313	DHS-230
Horizontal	Long	CB-231	N/A	DHL-231

**DEADBOLT LOCK****Notes**

- Lock is offset to save space on installation.
- Vertical and horizontal mounting options.
- 9 mm ( $\frac{3}{8}$ ") bolt throw.
- Additional bolt lengths available on request.
- Center to tip (unlocked) dimensions: Short - 21 mm (13/16"), Long - 32 mm (1 $\frac{1}{4}$ ").

**Part Information**

Mounting	Bolt Length	Timberline Part Number	Hafele Part Number	Wesko Part Number
Vertical	Short	CB-290	232.12.302	DVS-290
Vertical	Long	CB-291	N/A	DVL-291
Horizontal	Short	CB-280	232.12.311	DHS-280
Horizontal	Long	CB-281	N/A	DHL-281

**DEADBOLT LOCK—DOUBLE DOOR****Notes**

- Locks both doors without the use of a spring clip.
- Four mounting options.
- 13 mm ( $\frac{1}{2}$ ") bolt throw.
- 180° key rotation.
- Optionally top bolt can be offset.
- Optionally use with strike plates.
- Center to tip (unlocked) dimensions: Straight - 23 mm ( $\frac{29}{32}$ " ), Long - 35 mm ( $1\frac{3}{8}$ " ), Offset - 39 mm ( $1\frac{17}{32}$ " ).
- Mounting: LLH - Lower Left Hand, URH - Upper Right Hand, LRH - Lower Right Hand, ULH - Upper Left Hand



Mounting	Top Bolt	Timberline Part Number	Hafele Part Number	Wesko Part Number
LLH or URH	Straight Short	CB-250	232.35.300	DLD-250
LLH or URH	11/16" Offset	CB-251	232.35.303	DLD-251
LLH or URH	Straight Long			DLD-260
LRH or ULH	Straight Short	CB-255	232.35.301	DLD-255
LRH or ULH	11/16" Offset	CB-256	232.35.302	DLD-256
LRH or ULH	Straight Long			DLD-261

**DEADBOLT LOCK—HOOKED BOLT****Notes**

- Flipper door applications.
- 13 mm ( $\frac{1}{2}$ ") bolt throw.
- Locks directly over wood.
- Additional bolt lengths available on request.

**Part Information**

Timberline Part Number	Hafele Part Number	Wesko Part Number
N/A	N/A	DH-100



**SLAM LOCKS****Notes**

- Push to close action.
- Solid zinc construction.
- Allows for three different features depending on key positions:
  - Latched & locked
  - Latched & unlocked
  - Unlatched & locked
- 8 mm (5/16") bolt throw.

**Part Information**

Timberline Part Number	Hafele Part Number	Wesko Part Number
N/A	N/A	PTL-100



**COMBINATION LOCKS****Notes**

- Solid zinc construction
- 4 digit combination.
- Black or silver.
- Flush and surface mounting.
- Code finding and scrambling features.
- Four options for vertical and horizontal mounting.
- Mechanical with master key with no batteries.

**Part Information**

Mounting	Timberline Part Number	Hafele Part Number	Wesko Part Number
Horizontal - Right	N/A	231.16.300	C-600
Horizontal - Left	N/A	231.16.301	C-601
Vertical - Top	N/A	N/A	C-610
Vertical - Bottom	N/A	231.16.302	C-611





## CENTRAL LOCKING SYSTEMS

## FLANGE LOCK—SIDE MOUNT

## Notes

- Side mount for drawers.
- 180° key rotation.
- Configurable as left or right key rotation on installation.
- 13 mm ( $\frac{1}{2}$ ") lockbar throw
- Use with Lockbar Systems.
- Use with side lockbar clip.

## Part Information

Timberline Part Number	Hafele Part Number	Wesko Part Number
CB-150	234.86.017	FSM-150



## FLANGE LOCK WITH TENON

## Notes

- Front mount for drawers.
- 180° key rotation.
- Configurable as left or right key rotation on installation.
- 13 mm ( $\frac{1}{2}$ ") lockbar throw
- Use with Lockbar Systems.
- Use with lockbar clip or extended lockbar clip.

## Part Information

Timberline Part Number	Hafele Part Number	Wesko Part Number
CB-100	234.85.001	FSM-100



**FLANGE LOCK WITH TENON —SINGLE****Notes**

- Front mount for drawers.
- For use where installation space is limited.
- Fits within ½" drawer side clearance.
- 180° key rotation.
- Configurable as left or right key rotation on installation.
- 13 mm (½") lockbar throw
- Use with Lockbar Systems.
- Use with small lockbar clip.

**Part Information**

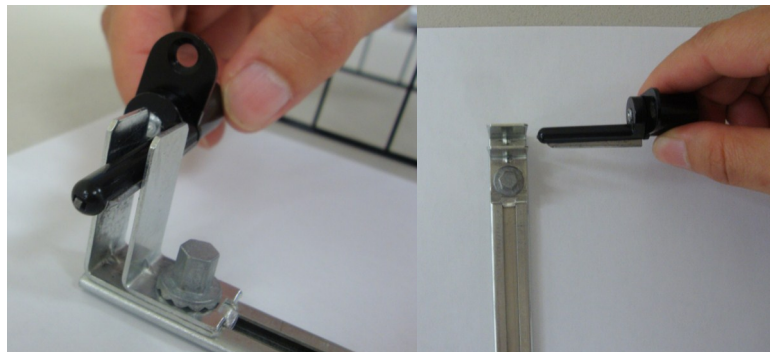
Timberline Part Number	Hafele Part Number	Wesko Part Number
CB-101	234.85.009	FLT-101

**SAFE—T—TENON****Notes**

- Maintains lock-actuator alignment.
- Superior to Timberline "Assure Sync" with fewer parts to install.
- Easier installation with wider tolerances.
- 180° key rotation (right hand).
- 13 mm (½") lockbar throw
- Use with Lockbar Systems.
- Use with reinforced lockbar clip.

**Part Information**

Timberline Part Number	Hafele Part Number	Wesko Part Number
N/A	N/A	FST-100





**CENTRAL LOCKING SYSTEM BODY****Notes**

- Central lock for Timberline System 300.
- Locks 2 pedestals of up to 4 drawers.
- 13 mm ( $\frac{1}{2}$ ") lockbar throw

**Part Information**

Description	Timberline Part Number	Hafele Part Number	Wesko Part Number
Central Lock Body	CB-500	237.46.003	CL-500
Flexshaft	FS-362	237.60.010	FX-362
Spring Clip	SC-100	237.44.014	SC-100

**SLIDER LOCK—ULTRA THIN****Notes**

- Horizontal mounting for overhead bins.
- Vertical mounting for wardrobe and other applications.
- Thickness for installation:  $\frac{5}{8}$ " or  $\frac{3}{4}$ "
- 13 mm ( $\frac{1}{2}$ ") lockbar throw
- Offset bars ordered to any length - no need to cut 50" bars.

**Part Information**

Description	Timberline Part Number	Hafele Part Number	Wesko Part Number
Slider Lock	CB-265	234.92.300	SL-265
Bar Holder	SP-260	223.63.300	BH-260
Strike Plate	SP-101	223.63.300	SP-101
Bars (order to length)	WB-480	223.63.300	OB-XXX



**2-DRAWER SIDE GANG LOCK****Notes**

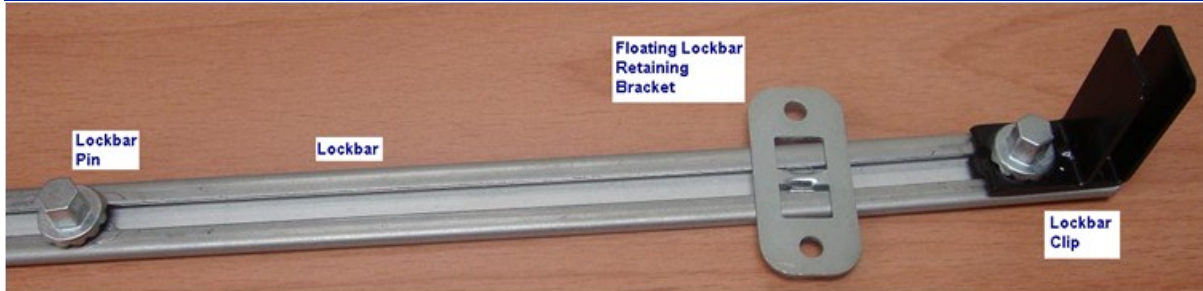
- Vertical mount for 2 drawer locking.
- 13 mm ( $\frac{1}{2}$ ") lockbar throw.
- Use with drawer lock wedge clip
- Fits within  $\frac{1}{2}$ " drawer side clearance.

**Part Information**

Description	Timberline Part Number	Hafele Part Number	Wesko Part Number
Gang Lock	CB-270	234.92.300	GL-270
Locking Wedge Clip	DC-500	234.91.090	WC-500

## LOCKBAR SYSTEMS

## LOCKBAR—FULLY ADJUSTABLE



## Notes

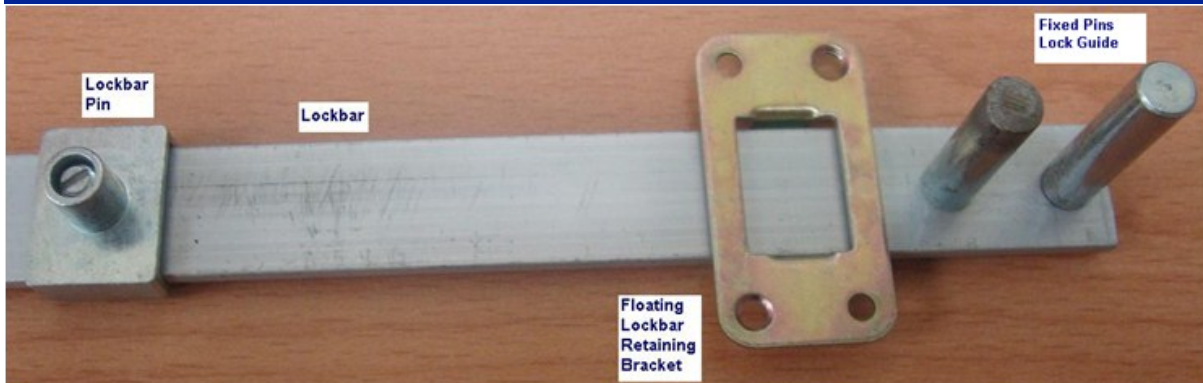
- Solid steel C-Bar construction.
- Adjustable lockbar clip, adjustable lockbar pin with floating lockbar retaining bracket.
- Wesko's unique floating lockbar retaining bracket "snaps in" to keep the lockbar in a floating position to allow for vertical movement of the bar regardless of channel depth.
- Mounted on one channel and preassembled with no loose components.
- Variety of lockbar clips for different applications: side clip, front clip, extended clip and reinforced clip.
- Alternative for Timberline systems 100, 101, 104, 120 (single sided).
- Optionally long lockbar pins are available for heavy duty slides.

## Part Information

Description	Timberline Part Number	Hafele Part Number	Wesko Part Number
Fully Adjustable Lockbar Set	N/A	N/A	LBS-100 <sup>1</sup>
Lockbar	LB-XX	234.87.XXX	LBA-XXX
Adjustable Lockbar Pin	AP-037	234.22.7XX	LBP-037
Floating Retaining Bracket	N/A	N/A	LBB-100
Lockbar Clip	LC-100	234.87.998	LBC-100
Small Lockbar Clip	LC-106	N/A	LBC-106
Side Lockbar Clip	LC-150	234.86.900	LBC-150
Double Side Lockbar Clip	TBD	N/A	LBC-151
Extended Lockbar Clip (Left)	LC-114	N/A	LBC-114
Extended Lockbar Clip (Right)	LC-104	N/A	LBC-104
Reinforced Lockbar Clip	N/A	N/A	LBC-160

## Notes

<sup>1</sup>. Assembled to customer specifications.

**LOCKBAR—SEMI ADJUSTABLE****Notes**

- Solid Aluminum bar construction with solid steel pins.
- Adjustable lockbar pin makes installation easier with wider tolerances.
- Fixed pins lock-guide, adjustable lockbar pin with floating lockbar retaining bracket.
- Wesko's unique floating lockbar retaining bracket keeps the lockbar in a floating position to allow for vertical movement of the bar regardless of channel depth.
- Mounted on one channel and preassembled with no loose components.
- Optionally long lockbar pins are available for heavy duty slides.

**Part Information**

Description	Timberline Part Number	Hafele Part Number	Wesko Part Number
Semi Adjustable Lockbar Set	N/A	237.10.XXX	LBS-200 <sup>1</sup>
Lockbar	N/A	237.10.XXX	LBD-XXX
Fixed Pins Lock Guide	N/A	Included	Included
Adjustable Lockbar Pin	N/A	237.22.XXX	LBP-040
Floating Retaining Bracket	N/A	237.23.006	LBB-200

**Notes**

- <sup>1</sup>. Assembled to customer specifications.

**LOCKBAR—FIXED****Notes**

- Solid Aluminum bar construction with all fixed solid steel pins for durability.
- Ideal for template construction.
- Fixed pins lock-guide, fixed pin with floating lockbar retaining bracket.
- Wesko's unique floating lockbar retaining bracket keeps the lockbar in a floating position to allow for vertical movement of the bar regardless of channel depth.
- Mounted on one channel and preassembled with no loose components.
- Optionally long lockbar pins are available for heavy duty slides.

**Part Information**

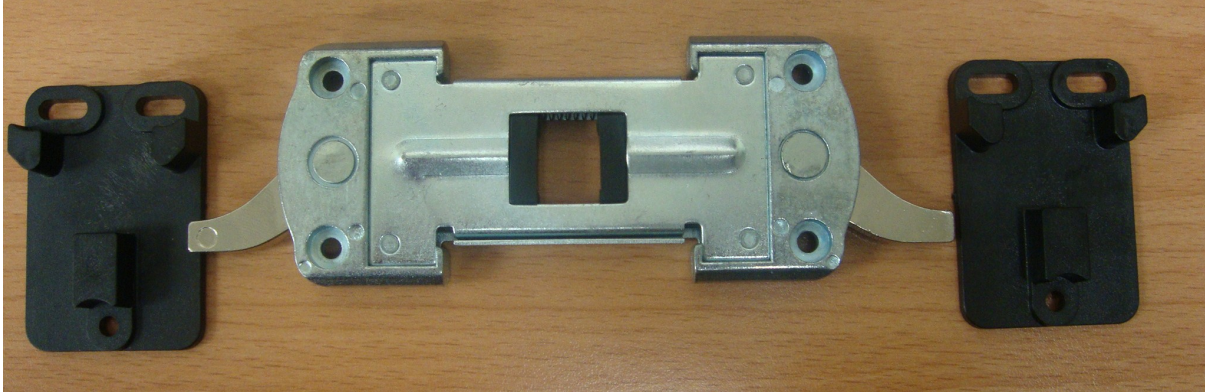
Description	Timberline Part Number	Hafele Part Number	Wesko Part Number
Fixed Lockbar Set	N/A	N/A	LBS-300 <sup>1</sup>
Lockbar	N/A	N/A	LBF-XXX
Fixed Pins Lock Guide	N/A	N/A	Included
Adjustable Lockbar Pin	N/a	N/A	Included
Floating Retaining Bracket	N/A	N/A	LBB-200

**Notes**

- <sup>1</sup>. Assembled to customer specifications.

## ANTI-TIP SYSTEMS

## ANTI-TIP LOCKABLE 2-DRAWER SYSTEM

**Notes**

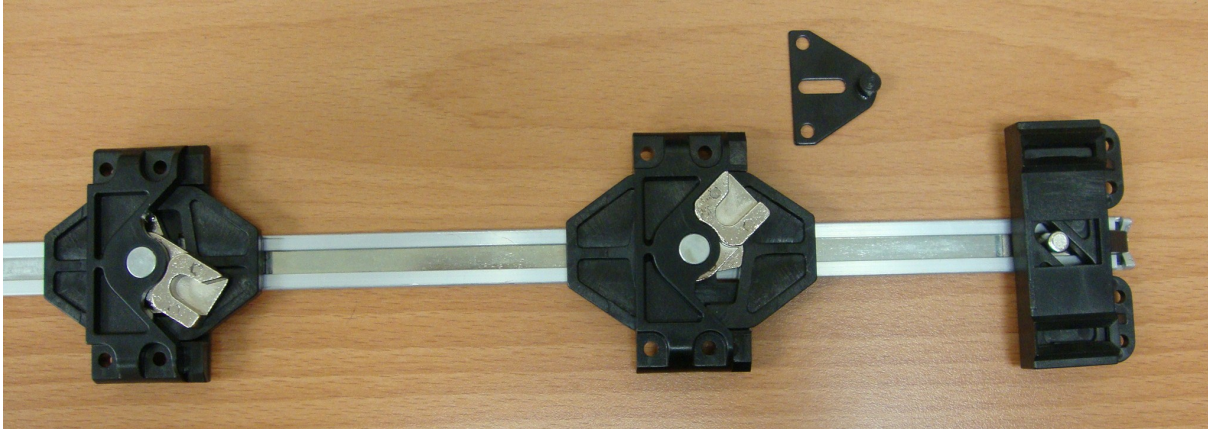
- All metal construction.
- Only one drawer can be opened at any time.
- Alternative to Timberline System 400 but optionally can be lockable.
- Deadbolt lock available upon request.
- All-in-one anti-tip and locking system.
- ½" drawer side clearance.

**Part Information**

Description	Timberline Part Number	Hafele Part Number	Wesko Part Number
Anti-Tip Snap Latch	SN-400	237.43.310	AT-L1
Anti-Tip Drawer Clip	DC-400	237.43.320	AT-C2
			(includes 2 clips)



## ANTI-TIP LATCH LOCKABLE MULTI-DRAWER SYSTEM



## Notes

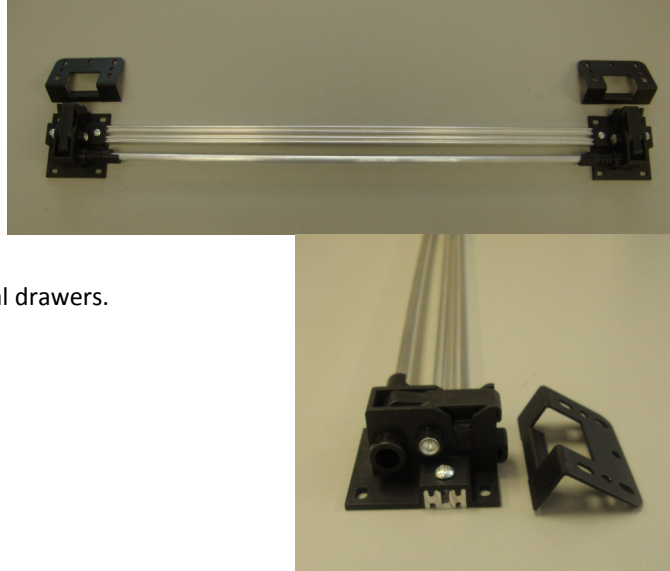
- Anti-tip device designed for 2 or more drawers.
- Not limited to 4 drawers and supports **5 or more drawers**.
- Left and right sides are available for lateral cabinet applications.
- Pulling out the first drawer engages one anti-tip latch which in turn keeps all remaining latches in the locked position and prevents any other drawer from opening.
- Can be used with/without lock for all-in-one anti-tip and locking system.
- Alternative to Timberline System 300, 350, 400.
- No complicated wedges to install.
- Mounted on one channel and preassembled with no loose components.
- Order as 2-drawer set with optional additional drawers.

## Part Information

Description	Timberline Part Number	Hafele Part Number	Wesko Part Number
2-Drawer Single Bar Set (Right)	N/A	N/A	ATS-202 <sup>1</sup>
3-Drawer Single Bar Set (Right)	N/A	N/A	ATS-203 <sup>1</sup>
4 <sup>+</sup> -Drawer Single Bar Set (Right)	N/A	N/A	ATS-20X <sup>1</sup>
Anti-Tip Bar	N/A	N/A	ATM-100-XXX <sup>1</sup>
Locking Module	N/A	N/A	ATM-101
Anti-Tip Latch (Left)	N/A	N/A	ATM-102
Anti-Tip Latch (Right)	N/A	N/A	ATM-112
Anti-Tip Actuator	N/A	N/A	ATM-103
2-Drawer Single Bar Set (Left)	N/A	N/A	ATS-302 <sup>1</sup>
3-Drawer Single Bar Set (Left)	N/A	N/A	ATS-303 <sup>1</sup>
4 <sup>+</sup> -Drawer Single Bar Set (Left)	N/A	N/A	ATS-30X <sup>1</sup>

**SIDE-BY-SIDE ANTI-TIP SYSTEM****Notes**

- Side-by-side anti-tip device designed for 2 or more drawers.
- 1¼" clearance on drawer back.
- Pulling out the first drawer rotates bar which locks all remaining latches.
- Mounted on one channel and preassembled with no loose components.
- Order as 2-drawer set with optional additional drawers.
- Anti-tip bar and rods are cut to length

**Part Information**

Description	Timberline Part Number	Hafele Part Number	Wesko Part Number
2-Drawer Single Bar Set	N/A	N/A	ATX-202 <sup>1</sup>
3-Drawer Single Bar Set	N/A	N/A	ATX-203 <sup>1</sup>
Anti-Tip Bar	N/A	N/A	ATX-100-XXX <sup>1</sup>
Locking Rod	N/A	N/A	ATX-101-XXX <sup>1</sup>
Anti-Tip Latch	N/A	N/A	ATX-102
Anti-Tip Actuator	N/A	N/A	ATX-103

**Notes**

<sup>1</sup> Assembled to customer specification.

## CAM LOCKS

## CAM LOCKS

## Notes

- Wood line Cam locks are available on request.
- Universal lock for doors and drawers.
- Vertical and horizontal mounting options.
- Can be configured left or right on installation.
- Key rotation 90° or 180°.
- Wide variety of cams are available.
- Cams are removable or interchangeable.
- Optionally use with strike plates.



## Part Information

Description	Timberline Part Number	Hafele Part Number	Wesko Part Number
Cam locks	CB-90— CB-199	235.06.XXX	On Request

## ACCESSORIES

## KEYS

## Notes

- Custom designs with names, logo's etc.
- Custom key jackets.
- Folding keys.
- Available on request.

## Part Information

- On request.



## STRIKE PLATES

## Notes

- Several strike plate designs are available.
- Black and nickel finishes are available.
- Additional strike plates are available on request.



## Part Information

Description	Timberline Part Number	Hafele Part Number	Wesko Part Number
Strike Plate—Flat Channel	SP-185-3	239.08.303	SP-303
Strike Plate—Offset (1/4")	SP-257-3	239.61.328	SP-328
Strike Plate—Offset (3/8")	N/A	239.61.350	SP-350
Strike Plate—Belt Loop (1 9/16")	N/A	239.61.337	SP-337
Strike Plate—90° (1 3/16")	N/A	239.61.319	SP-319

**DRAWER LOCKING WEDGE****Notes**

- Use with Gang Lock

**Part Information**

Timberline Part Number	Hafele Part Number	Wesko Part Number
DC-500	234.91.090	WC-500

**SPACERS****Notes**

- Converts locks to fit 5/8" wood.

**Part Information**

Description	Timberline Part Number	Hafele Part Number	Wesko Part Number
Round Spacer			SP-100
Deadbolt Single Spacer			SP-101

**TRIM RINGS****Notes**

- Finish drill holes.

**Part Information**

Finish	Timberline Part Number	Hafele Part Number	Wesko Part Number
Polished Nickel	BZ-100	210.04.062	TR-100
Old English	BZ-200	210.14.053	TR-200
Black	BZ-300	210.04.035	TR-300
Bronze	BZ-400	210.04.017	TR-400
Polished Brass	BZ-500	210.04.054	TR-500
Satin Nickel	BZ-700	210.04.070	TR-700



**WESKO Locking Systems**

4570 Eastgate Parkway  
Mississauga Ontario  
L4W 3W6

Tel: 905-629-3227

Fax: 905-629-7293

Email: [sales@weskolock.com](mailto:sales@weskolock.com)